

MD1

DISTRIBUTORI MONOBLOCCO MONOBLOCK DIRECTIONAL VALVES MONOBLOCKSTEUERGERÄTE

DATI TECNICI • TECHNICAL DATA • TECHNISCHE MERKMALE

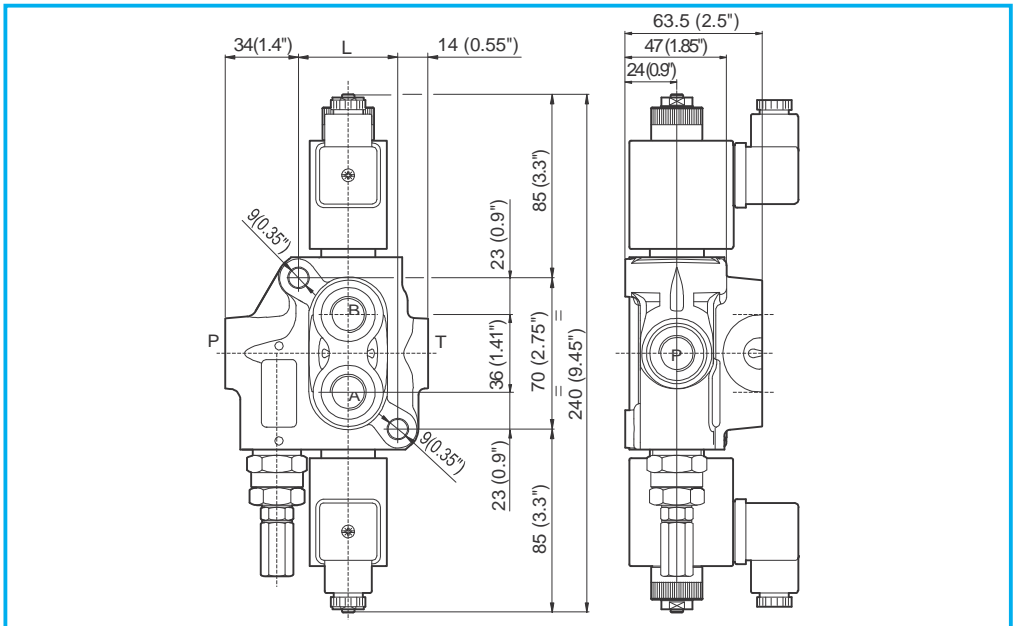
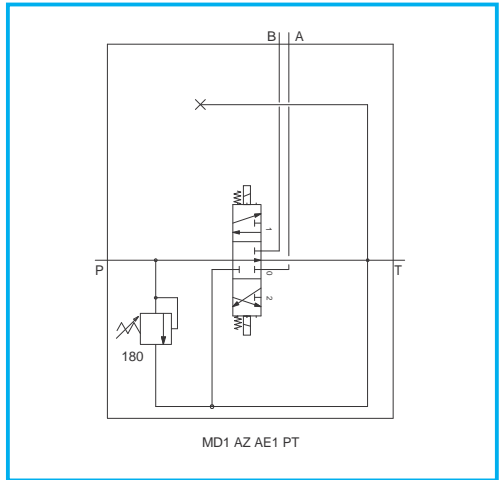
| | |
|---|--|
| Portata nominale (max) Nominal flow (max) Nominaler Durchfluß (max) | 20 (30) l/min 5.3 (7.9) gpm |
| Pressione massima Maximum pressure Maximaler Betriebsdruck | 180 (2610) bar (psi) |
| Contropressione massima allo scarico Maximum tank pressure Maximaler Gegendruck Tankleitung | 5 (73) bar (psi) |
| Massima trafilla interna Maximum internal leakage Maximale interne Leckage | 40 cc/min (21 cSt - 100 bar) |
| Temperatura d'utilizzo Temperature range Betriebstemperatur | -20°C +80°C NBR seals |
| Viscosità olio Oil viscosity Ölviskosität | Da 10 cSt a 100 cSt From 10 cSt to 100 cSt Von 10 cSt nach 100 cSt |
| Fluido Fluid Öl | Olio a base minerale Mineral based oil Mineral Öl |

FILETTATURA • THREAD • GEWINDE

| CODICE MODEL BEZEICHNUNG | TIPO TYPE GEWINDE | COPPIA DI SERRAGGIO Nm TORQUE Nm ANZUGSMOMENT Nm |
|--------------------------------|-------------------------|--|
| C | M 18 X 1,5 | 35 |
| A | 3/8" Gas | 40 |
| E | 3/4" UNF-16 | 50 |

DIMENSIONI • SIZE • ABMESSUNGEN

| N° DI SEZIONI N° OF SECTIONS ANZAHL ELEMENTE | L mm (inch) | MASSA Kg (lb) WEIGHT Kg (lb) GEWICHT Kg (lb) |
|--|----------------|--|
| MD1 | 46 (1.8) | 2.8 (6.2) |



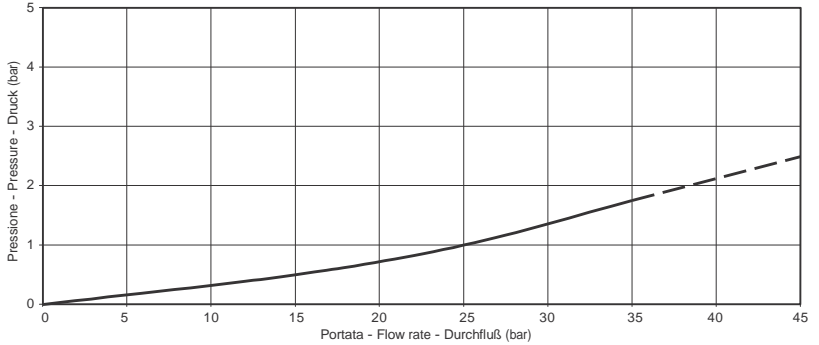
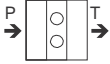


DINOIL

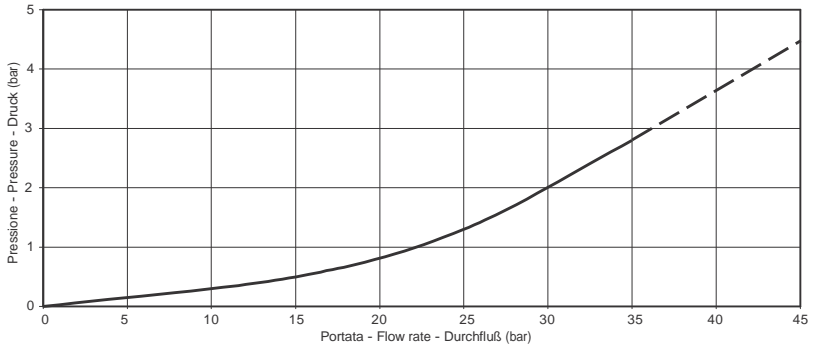
**CURVE CARATTERISTICHE
FLOW CURVES
TYPISCHE KURVEN**

Le curve caratteristiche in catalogo sono tipiche di prodotti di produzione testati in laboratorio e non sono necessariamente rappresentative di ogni unità.
Performance Characteristics shown in catalog are typical of production products tested in laboratory and are not necessarily representative of any other unit.
Die Werte im Katalog beziehen sich auf Standardware, die auf der Prüfbank getestet wurde und sind nicht repräsentativ für andere Einheiten.

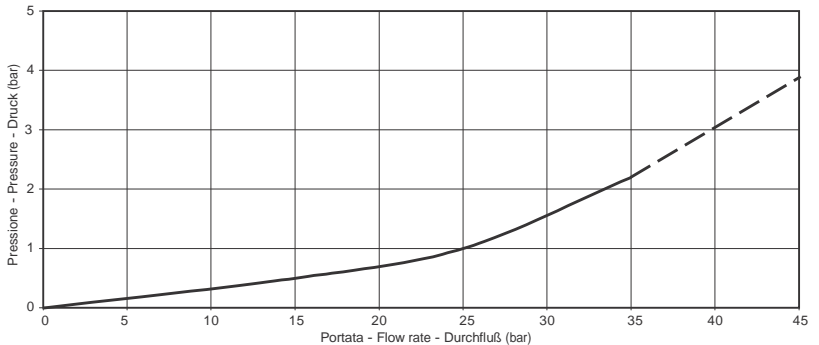
P-T



P-A



B-T



Parametri di prova / Testing parameters / Prüfparameter: 50°C - 21 cSt (spola circuito 1 - spool type 1- steuertyp 1)

CIRCUITI E SCHEMI IDRAULICI
HYDRAULIC CIRCUITS AND SCHEMES
STEUERTYPEN UND HYDRAULISCHE SCHEMATA

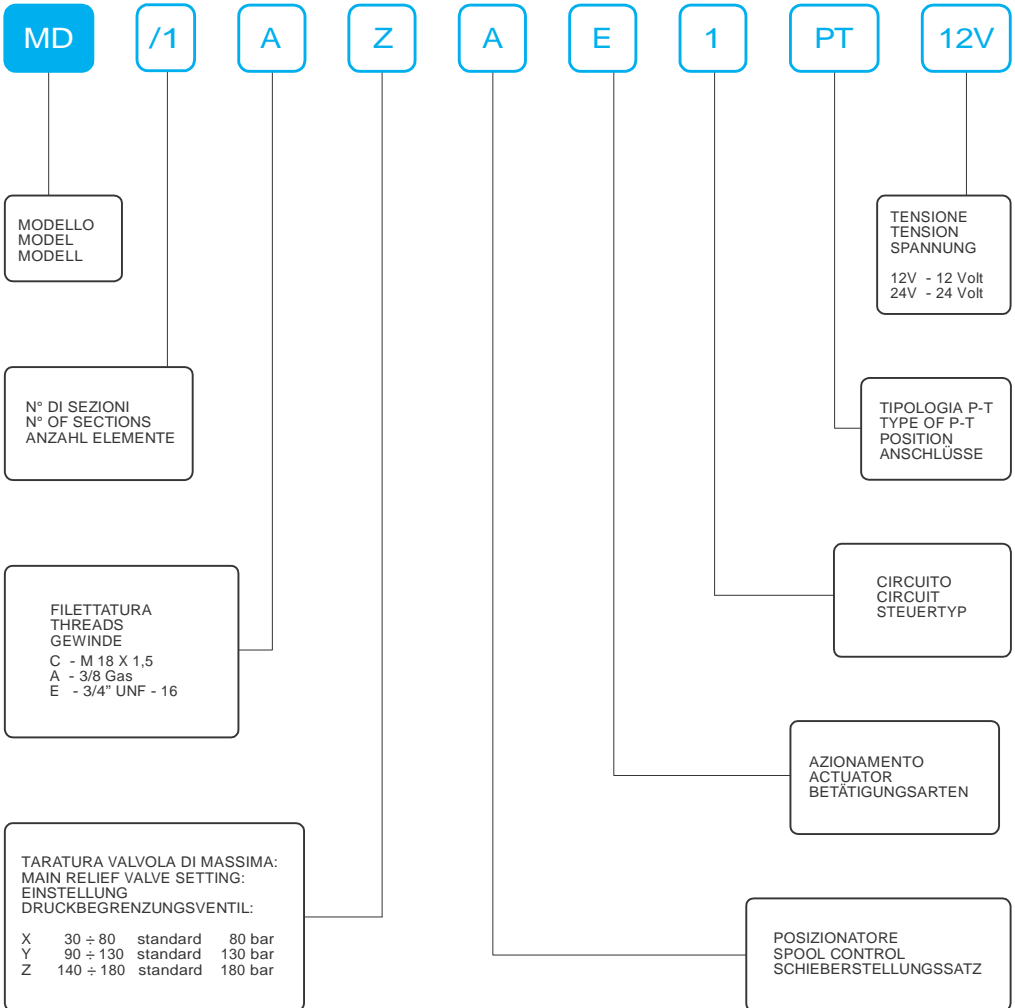
Le configurazioni indicate sono relative a prodotti standard. Per altre configurazioni prego contattarci.
 The follow configurations are related to standard products. Please, contact us for other configurations.
 Die abgebildeten Produkte sind typische Standardwaren. Sollten Sie für Ihre Anwendung Änderungen benötigen, wenden Sie sich bitte an uns.

POSIZIONATORE • SPOOL CONTROL • SCHIEBERSTELLUNG

| | | |
|----------|--|--|
| A | | Posizione neutra in 0 Neutral position in 0 Neutralstellung in 0 |
| E | | Posizione neutra in 0 Neutral position in 0 Neutralstellung in 0 |
| F | | Posizione neutra in 0 Neutral position in 0 Neutralstellung in 0 |

CIRCUITO • SPOOL TYPE • STEUERTYP

| | | POS. 3 | POS. 1 | POS. 0 | POS. 2 | POS. 4 |
|----------|--|-------------------------|--------|------------------------|------------------------|--------|
| 1 | | P → B A → T BP → | | A → B → BP → | P → A B → T BP → | |
| 3 | | P → B A → T BP → | | A, B → T BP → | P → A B → T BP → | |
| 4 | | A → T B → BP → | | T → A → B → BP → | P → A B → T BP → | |
| 5 | | P → B A, T → BP → | | T → A → B → BP → | A → B → T BP → | |

**ISTRUZIONI PER L'ORDINAZIONE
ORDERING INSTRUCTIONS
BESTELLANLEITUNG**

Notare: non dirigere getti d'acqua direttamente sulla valvola.
Note: do not wash the valve with direct water jet.
Bitte beachten: Steuergerät/Ventil nicht mit Hochdruckreiniger waschen.

DATI TECNICI • TECHNICAL DATA • TECHNISCHE MERKMALE

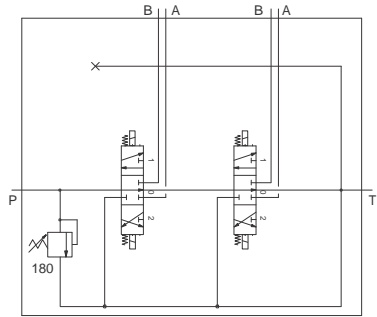
| | |
|---|--|
| Portata nominale (max) Nominal flow (max) Nominaler Durchfluß (max) | 20 (30) l/min 5.3 (7.9) gpm |
| Pressione massima Maximum pressure Maximaler Betriebsdruck | 180 (2610) bar (psi) |
| Contropressione massima allo scarico Maximum tank pressure Maximaler Gegendruck Tankleitung | 5 (73) bar (psi) |
| Massima trafilatura interna Maximum internal leakage Maximale interne Leckage | 40 cc/min (21 cSt - 100 bar) |
| Temperatura d'utilizzo Temperature range Betriebstemperatur | -20°C +80°C NBR seals |
| Viscosità olio Oil viscosity Ölviskosität | Da 10 cSt a 100 cSt From 10 cSt to 100 cSt Von 10 cSt nach 100 cSt |
| Fluido Fluid Öl | Olio a base minerale Mineral based oil Mineral Öl |

FILETTATURA • THREAD • GEWINDE

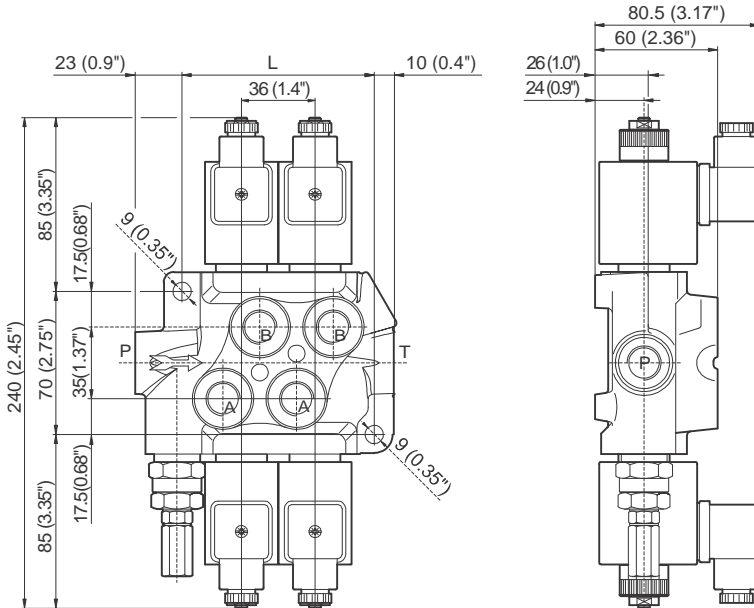
| CODICE MODEL BEZEICHNUNG | TIPO TYPE GEWINDE | COPPIA DI SERRAGGIO Nm TORQUE Nm ANZUGSMOMENT Nm |
|--------------------------------|-------------------------|--|
| C | M 18 X 1,5 | 35 |
| A | 3/8" Gas | 40 |
| E | 3/4" UNF-16 | 50 |

DIMENSIONI • SIZE • ABMESSUNGEN

| N° DI SEZIONI N° OF SECTIONS ANZAHL ELEMENTE | L mm (inch) | MASSA Kg (lb) WEIGHT Kg (lb) GEWICHT Kg (lb) |
|--|----------------|--|
| MD/2 | 94 (3.7) | 4.5 (9.9) |
| MD/3 | 133 (5.2) | 6.5 (14.3) |
| MD/4 | 169 (6.6) | 8.5 (18.7) |
| MD/5 | 205 (8.1) | 10.8 (23.1) |
| MD/6 | 241 (9.5) | 12.5 (27.5) |



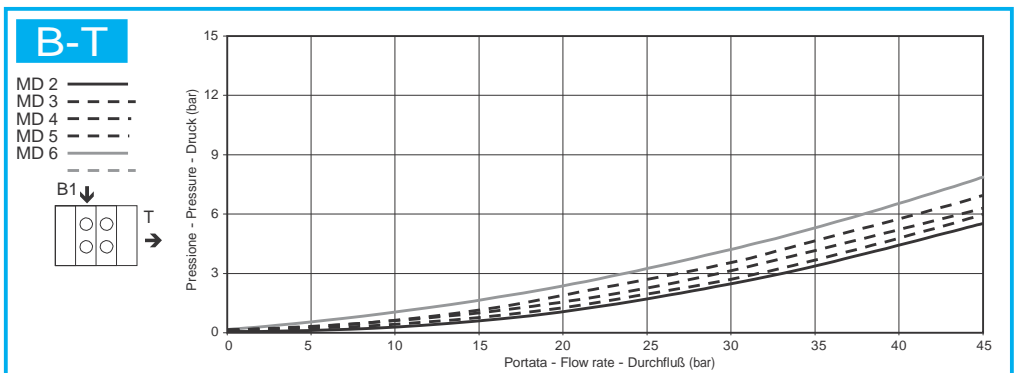
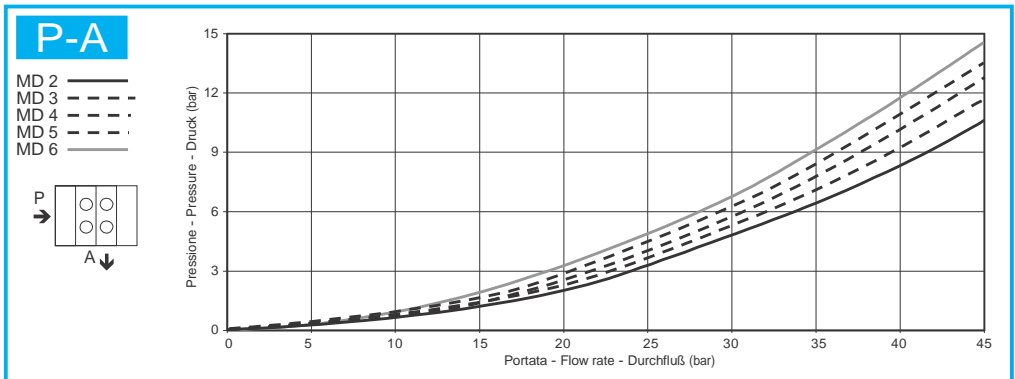
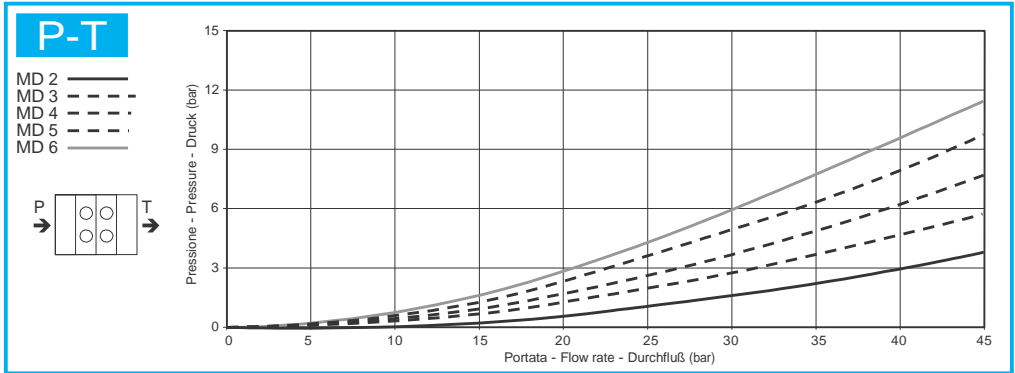
MD/2 AZ AE1x2 PT





CURVE CARATTERISTICHE
FLOW CURVES
TYPISCHE KURVEN

Le curve caratteristiche in catalogo sono tipiche di prodotti di produzione testati in laboratorio e non sono necessariamente rappresentative di ogni unità.
Performance Characteristics shown in catalog are typical of production products tested in laboratory and are not necessarily representative of any other unit.
Die Werte im Katalog beziehen sich auf Standardware, die auf der Prüfbank getestet wurde und sind nicht repräsentativ für andere Einheiten.



Parametri di prova / Testing parameters / Prüfparameter: 50°C - 21 cSt (spola circuito 1 - spool type 1- steuertyp 1)